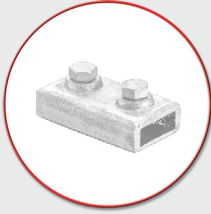
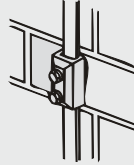


**Oblong Test Clamp**

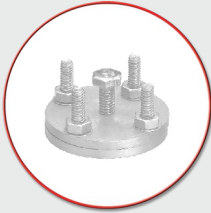


Material : Gunmetal



C to ONDUCTOR SIZE	CAT. NO.
25 x 3	COTG-253
38 x 6	COTG-386
50 x 6	COTG-506

**Plate Type Test Clamp**

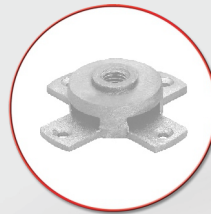


Material : Gunmetal or Brass

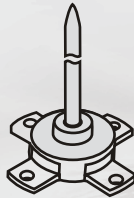


CONDUCTOR SIZE mm	CAT. NO.
26 x 12	CPCG-2612

**Light Duty Saddle / Air Terminal  
Base / Lightning Arrester**



Material : Gunmetal or Brass



THREAD DIAMETER mm	Maximum Conductor Width mm	Material Gunmetal Cat. No.
10	25	CGS-10
16	25	CGS-16
20	25	CGS-20